

2020 Model Year Standard Specification



Principal Dimensions

Length overall (incl. pulpit):

55'6" (16.92m)

Length overall (excl. pulpit):

53'6" (16.32m)

Beam (incl. gunwale):

14'10" (4.52m)

Berths:

6 - 9

Draught:

3'11" (1.20m)

Height above waterline

(incl. arch & nav. light mast):

18'2" (5.56m)

Transport height:

17'1" (5.15m)

Dry weight (approx.):

21.16 tonnes / 23.69 US tons (21,000kg)

Fuel capacity:

530 gallons / 637 US gallons
(2,412 litres)

Water capacity (incl. calorifier):

120 gallons / 145 US gallons
(550 litres)

Engines & Performance

Twin Volvo Penta D11-725 shaft drive,
diesel (1450hp):
32 knots

Type Approval:

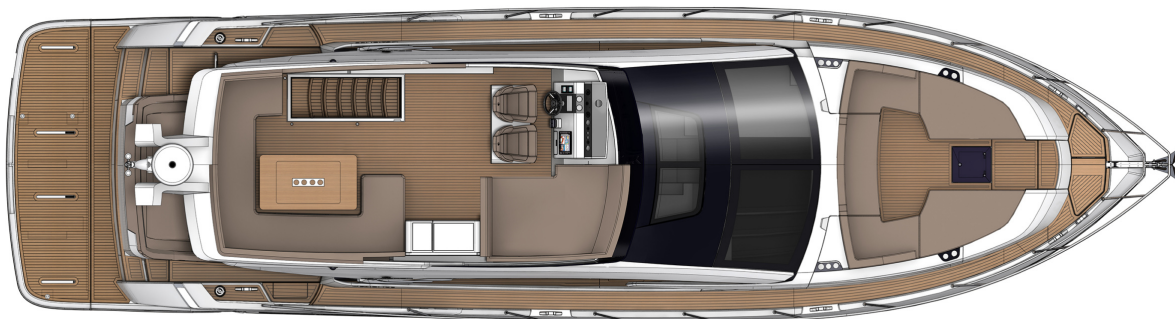
B

Max Capacity:

16 persons

Deck Plans

Flybridge



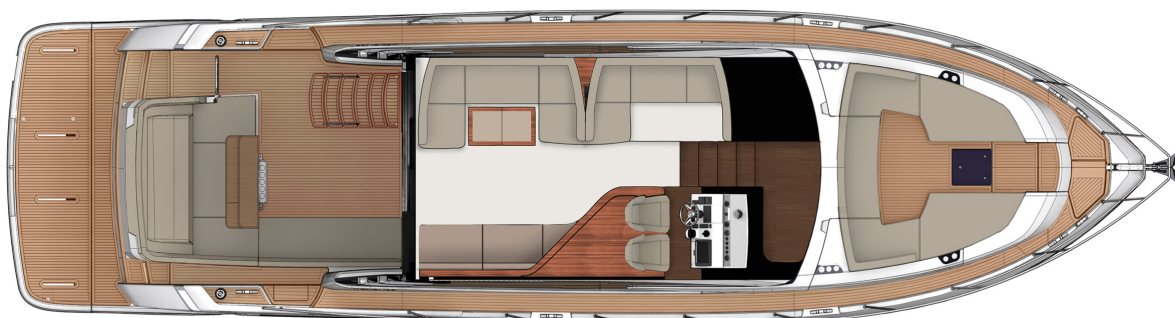
Main Deck Galley-Up Forward



Main Deck Galley-Up Aft



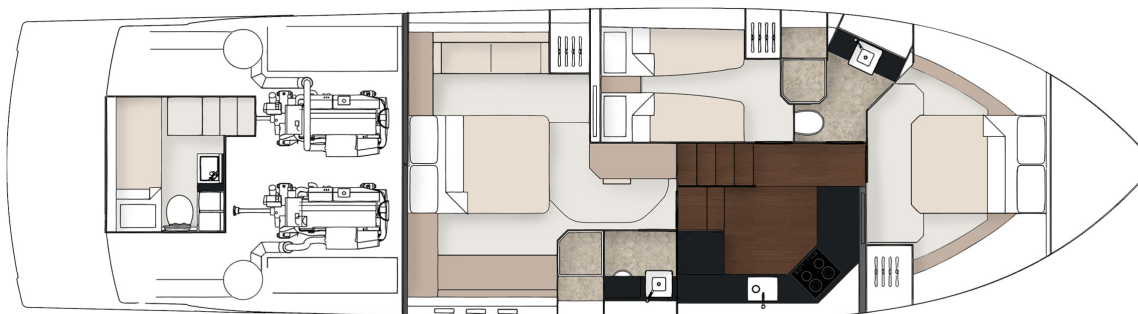
Main Deck Galley-Down with saloon couch



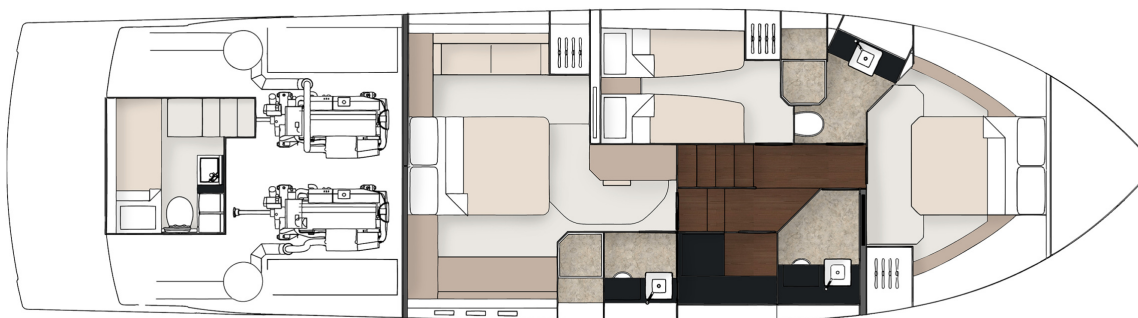
Main Deck Galley-Down with saloon sideboard



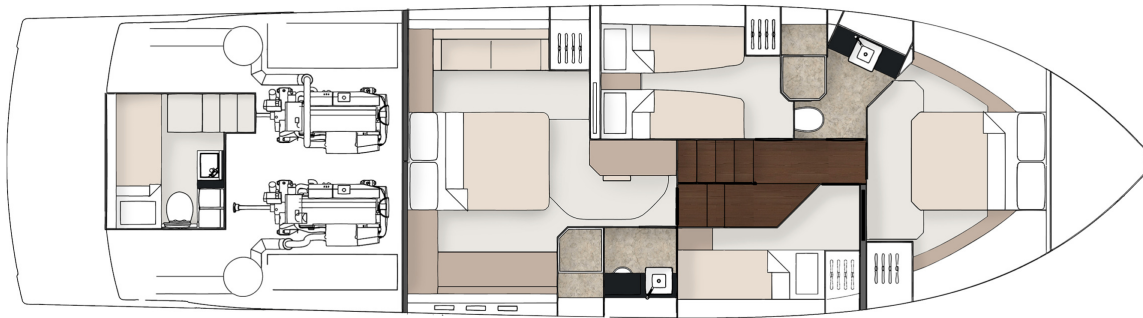
Lower Deck 3 Cabin, Galley Down



Lower Deck 3 Cabin with day head & utility area



Lower Deck 4 Cabin



Deck

- | | |
|------------------------------------|----------------------------------------------------------|
| Anchor chain locker | Moulded non-slip deck surface |
| Anchor winch (electric) | Remote control searchlight |
| Anchor winch controls | Riding light |
| Bathing platform ladder | Self-stowing Delta® anchor (25kg) |
| Calibrated anchor chain (50m) | Stainless steel aft fairleads |
| Ensign & staff | Stainless steel bow fairleads |
| Fender set | Stainless steel bow, cockpit, stern & twin spring cleats |
| Foredeck drinks holders | Stainless steel gunwale with rubber inserts |
| Foredeck glazing | Stainless steel pulpit |
| Foredeck stowage lockers | Teak laid bathing platform |
| Foredeck seating | Twin horns |
| Fuel fillers | Water filler |
| Full set of IMCO navigation lights | Windscreen washers |
| Handrail | Windscreen wipers |
| Hot & cold water transom shower | |

Flybridge & Second Helm Position

- | | |
|-------------------------------------------------------------------------------|---------------------------------------------------------------------|
| 12V weatherproof socket with USB | Fire extinguisher |
| Access hatch | Flybridge bar unit with refrigerator & sink |
| Adjustable/tilt steering wheel | Garmin digital multi-function instrument system with colour display |
| Bilge pump warning lights & audible alarms | Helm positioned to port for visibility through flybridge hatch |
| Bolstered helm seating | Teak table with protective cover |
| Bow thruster controls | High speed magnetic compass |
| Drinks holders | |
| Electronic single-lever throttle & gear controls for port & starboard engines | |

Flybridge & Second Helm Position

Continued

Instrument covers	Rudder position indicator
Moulded non-slip deck surface	Seat base covers
Powered steering	Seating adjacent to helm
Radar mast	Teak laid flybridge steps
Remote anchor winch controls	Trim tab controls
Remote control searchlight with controls at both helm stations	Twin helm seats
Repeat autopilot controls	Upholstered seating area
Repeat engine bay fire extinguisher controls	VHF radio incorporating intercom
Repeat flybridge engine instrumentation, controls & electronics	Wind-deflecting screen with grab rail

Helm Position

12V socket with USB port	Garmin GHP 20 autopilot system
Adjustable/tilt steering wheel	Garmin GMI 20 digital multi-function instrument system with colour display
Bilge pump switches with integral operating warning lights & audible alarms	Garmin VHF 300i marine radio
Black mesh windscreen covers	High speed magnetic compass
Bow thruster controls	Opening window
Companion seating opposite helm with table	Overhead glazing
Controls for engine bay fire extinguisher system	Powered steering
Drinks holders	Red night-light illumination to helm
Electronic single-lever throttle & gear controls for port & starboard engines	Remote anchor winch controls
Fuel gauges	Rudder position indicator
Full engine instrumentation inc; tachometers, temperature gauges, audible alarms & engine hour meters	Searchlight controls
	Switches for navigation & riding lights, windscreen wipers & engine bay extractor fans
	Trim tab controls
	Twin helm seats

Electrical Systems

230 - 240V 50Hz
All 240V, 24V & 12V circuits (where applicable) protected by circuit breakers with main electrical load control panel
Heavy duty circuit breakers
Isolating switches to all batteries
Onan® 9.5kW generator
12 Volt
Voltage dropper from domestic batteries

Electrical Systems

Continued

24 Volt

Batteries - 2 x heavy duty batteries exclusively for port engine starting
 Batteries - 2 x heavy duty batteries exclusively for starboard engine starting
 Batteries - 4 x heavy duty batteries wired in parallel supplying domestic services
 Circuit breaker for anchor winch
 Emergency battery coupling system permits each engine to start from opposite battery bank
 Regulated battery charger

240 Volt

Polarity check & earth leakage protection system
 Power points throughout fed from shore power or generator
 Regulated 80amp charger for domestic batteries
 Shore power supply
 Spare circuit breakers for optional equipment

Cockpit

12V heavy duty weatherproof socket
 Access to lazarette or crew cabin
 Access to side deck
 Bathing platform lights
 Boat hook
 Deck level lighting
 Drinks holders
 Engine bay access hatch with stainless steel gas struts
 Fender stowage
 'J' shaped cockpit seating with adjustable backrest to make sunbed

Life raft stowage
 Manual bilge pumps
 Mooring warps
 Mooring warp stowage
 Port side access
 Single level floor from cockpit to saloon
 Teak laid floor throughout self-draining cockpit
 Teak table with drinks holder
 Transom gate
 White vinyl cover

Interior Décor

Choice of interior finishes from the Amalfi, Capri, Hamptons or St Tropez interior styling ranges selected by the Fairline Yachts Design Studio

Hullform & Construction

Antifouling protection to hull
 Bow thruster
 Deep 'V' forward 12.5° deadrise aft
 Design, layout & detailing by the Fairline Yachts Design Studio
 Feature windows with opening portholes
 Full length moulded spray deflectors
 Hull/deck joint bolted & bonded

Integrally moulded engine bearers
 Isophthalic gel coat backed by isophthalic resin-rich powder-bound glass mat
 Resin infused cored hull & liner with hand-laid deck & components
 Polyurethane foam cores throughout deck for strength & thermal insulation

Saloon

40" Samsung TV with Fusion AV750
DVD/Radio & wireless connectivity
Coffee table converts to dining table
FAIRLINE EDITION durable tumblers
(set of 6)

Overhead lighting
Sideboard with stowage
Sliding patio door to cockpit

Galley

Avonite work surface
Chopping board to sink infill
Crockery stowage
Extractor fan
FAIRLINE EDITION melamine dinner
service (24-piece, 6 place settings)
Fire extinguisher
First aid kit

Full height fridge/freezer
Induction hob
Integrated waste bin
Microwave combi oven
Overhead lighting
Random oak floor
Sink with hot & cold mixer tap
Stowage cupboards & drawers

Lobby

Access to electrical control panel
Access to master cabin, guest cabins &
day head
Handrail

Lighting to stair risers
Space for (optional) domestic
appliance

Accommodation

Master Cabin

Aluminium venetian blinds
Double bed
Feature windows with opening
portholes
Mirror
Sideboard with storage drawers

Overhead feature lighting
Reading lights
Sofa
Vanity unit with stool
Wardrobe

Master Cabin En Suite

Aluminium venetian blinds
Avonite vanity unit locker & basin with
hot & cold pressurised water
Electric silent-flush freshwater toilet
Extractor fan
Full set of bathroom fittings
Full size shower with seat &
hinged door

Large hull window with single opening
port hole
Mirror
Mirrored lockers
Overhead lighting
Random oak floor
Shower tray automatic pump-out
system

Forward Guest Cabin

Aluminium venetian blinds
Double bed with storage drawers
Escape hatch to foredeck
Feature windows with single opening
porthole

Overhead glazing with blind
Overhead lighting
Reading lights
Wardrobe with mirrored doors

Forward Guest Cabin En Suite /Day Head

Aluminium venetian blinds	Mirror
Day access	Mirrored lockers
Electric silent-flush freshwater toilet	Overhead lighting
Extractor fan	Random oak floor
Full set of bathroom fittings	Shower tray automatic pump-out system
Full standing height shower with hinged door	Vanity unit and basin with hot & cold pressurised water

Port Side Guest Cabin

Aluminium venetian blinds	Mirror
Bedside table	Overhead lighting
Feature windows with single opening porthole	Reading lights
Full length berths x 2	Wardrobe

Starboard Guest Cabin

Bedside table	Mirror
Bunk berths x 2	Wardrobe

Lazarette

Access through hatch in cockpit seating

Crew Cabin (Optional)

Access through hatch in cockpit seating	Mirror
Electric silent-flush freshwater toilet	Opening porthole
Feature window with blind	Overhead lighting
Full length berth	AC Power point
Hanging locker	Random oak floor
	Sink with hot & cold mixer tap

Engines & Sterngear

Automatic bilge pumps for forward bilge, engine bay & rudder bay with manual 'on' override	Engine room soundproofing
Automatic engine bay fire extinguisher system	Exhaust overheat warning system
Dripless shaft seals	High capacity emergency manual bilge pump system with dedicated valves
Electric engine bay fans	Manganese bronze 'P' brackets
Electro-hydraulic trim tabs with cathodic protection	Manganese bronze propellers contra-rotating
Engine air intakes	Sea cocks on all inlets/outlets below waterline
Engine bay lights	Stainless steel alloy shafts

Fuel System

Emergency fuel shut-off valves accessible via cable-operated remote control
High capacity water separators & fuel filters

Individual fillers & vents to port & starboard
Twin fuel tanks with balance pipe

Freshwater System

Automatic, pressurised supply
Calorifier hot water system

Water tank

Waste Water System

Holding tank (170 litres) with electric macerator & deck pump-out

USA Specifications

In addition to or in lieu of those listed above

Voltage - 2 x 110V (220V) 60Hz

Whilst every effort is made to keep all sales literature up to date, it should not be regarded as an infallible statement of current specifications & does not constitute an offer for the sale of any particular boat. We continually seek to improve the specification & design of our boats, so alterations & upgrades to specifications take place continually.

Appointed dealers are not agents of Fairline Yachts Ltd & are not authorised to commit Fairline Yachts Ltd by any express or implied undertaking or representation.

Performance Figures: Power quoted in our literature for diesel inboard engines is crankshaft output.

Performance Estimates: Performance estimates are given in good faith but are in no way guaranteed for any particular model. Dirt on the bottom of the boat, damage to the propellers, engine tuning, external water & air temperatures & the weight of crew, fuel & water carried can all adversely affect performance. For those & other reasons we can give no performance guarantees