



# SQUADRON 53

We're going places. Join us.







## THE SQUADRON 53 A DESIGN MASTERPIECE

---

Let it be said with undeniable certainty that nothing was left to chance when it came to designing and building the Squadron 53.

Every precisely-placed curve, every elegant edge, every understated shade of colour has its place in the grand scheme of things. And simply because absolute attention to detail and a genuine appreciation of quality go hand-in-hand.

For us, painstakingly handcrafting an object of luxury such as the Squadron 53 is a matter of personal enjoyment and inner satisfaction... both ours and yours. In fact, you have just to run your hand over the perfectly matched grain of the 53's woodwork, or take in the graceful arch of its swept flybridge, or immerse yourself in a space so thoroughly considered to know it's all true.



# ALBERTO MANCINI'S VISION FAIRLINE'S LONG-STANDING HERITAGE

---

When we embarked on our new design vision for the Squadron 53, we made a conscious decision to be bold. We even dared to reimagine the classic Fairline form in collaboration with one of Italy's most exciting yacht designers, Alberto Mancini. But we never did so at the expense of our uncompromising, engineering heritage.

Which means every feature on the Squadron 53 – whether you can immediately see it, or not – has been carefully thought about and assembled with the entire yacht in mind.

## Specification highlights

- Exterior styling by Alberto Mancini
- Foredeck seating
- Cockpit sunpad
- Skylight above lower helm
- 3 or 4 cabin layouts
- Single level floor throughout the main deck
- Full standing height in mid master cabin

## Optional equipment highlights

- Submersible bathing platform with 500kg lifting capacity
- Seakeeper® 6 gyroscopic stabiliser
- Single berth crew cabin
- Harman Kardon audio upgrade
- Marble upgrade throughout the interior
- Foredeck sky canopy





















The image shows the interior of a yacht's cockpit during sunset. The space is elegantly furnished with dark wood paneling and light-colored quilted upholstery. A central helm station features a steering wheel and various electronic displays. To the left, a seating area is equipped with a patterned cushion and a small table holding a silver teapot and a cup. Large windows provide a panoramic view of the ocean and the colorful sky. The ceiling is white with recessed lighting and a large skylight. The overall atmosphere is one of luxury and comfort.

DESIGNED TO TAKE  
YOUR BREATH AWAY







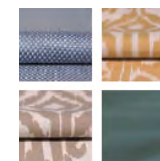




# EVEN OUR DESIGN SCHEMES HAVE A DESTINATION IN MIND

In the spirit of building the perfect yacht at every possible level, we have also carefully created four different interior design schemes for you to choose from:

## Amalfi



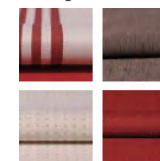
Inspired by Liguria's local architecture, this scheme exudes the sunny warmth synonymous with fragrant Italian lemon trees and the umbrella-lined shores of the Amalfi Coast.

## Capri



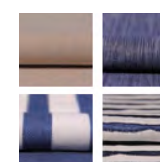
Understated, earthy colours, effortlessly combined with rich natural textures. All the hallmarks of an interior design collection that is as gentle as the Mediterranean breeze.

## Hamptons



Evoking elegant vintage design cues, whilst offering a bold and contemporary interpretation of the luxury that was once the preserve of America's East Coast.

## St. Tropez



An ode to the sea where all manner of deep, oceanic blues tastefully swirl with muted greys, delicate creams and classic nautical motifs.





# BEAUTIFULLY BALANCED PROPORTIONS

## Principal Dimensions

Length overall (exc. pulpit)	53'6" (16.32m)
Beam (inc. gunwale)	14'10" (4.52m)
Draught	3'11" (1.20m)
Height above waterline	18'2" (5.56m)
Transport height	17'1" (5.15m)
Dry weight (approx.)	21.16 imp. tons/23.69 US tons (21,000kg)
Fuel capacity	530 gallons/637 US gallons (2,412 litres)
Water capacity (inc. calorifier)	120 gallons/145 US gallons (550 litres)
Sleeps	6 – 9
Classification	CE Category B
Capacity	16 persons

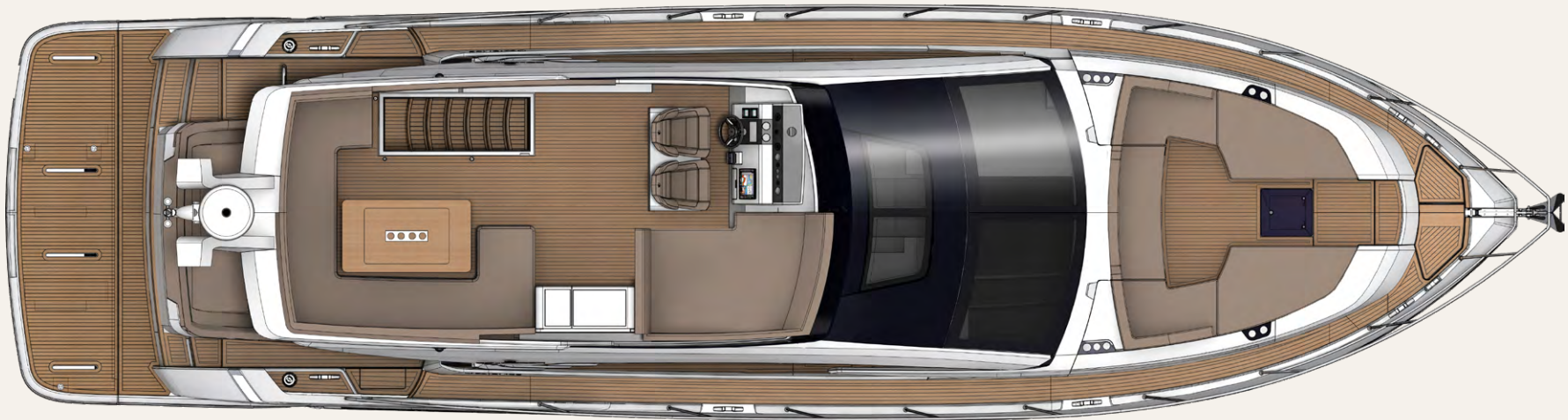
## Engines and Performance

2 x Volvo Penta D11-725 shaft drive, diesel (1450hp): 32 knots





## SQUADRON 53 FLYBRIDGE





## SQUADRON 53 MAIN DECK



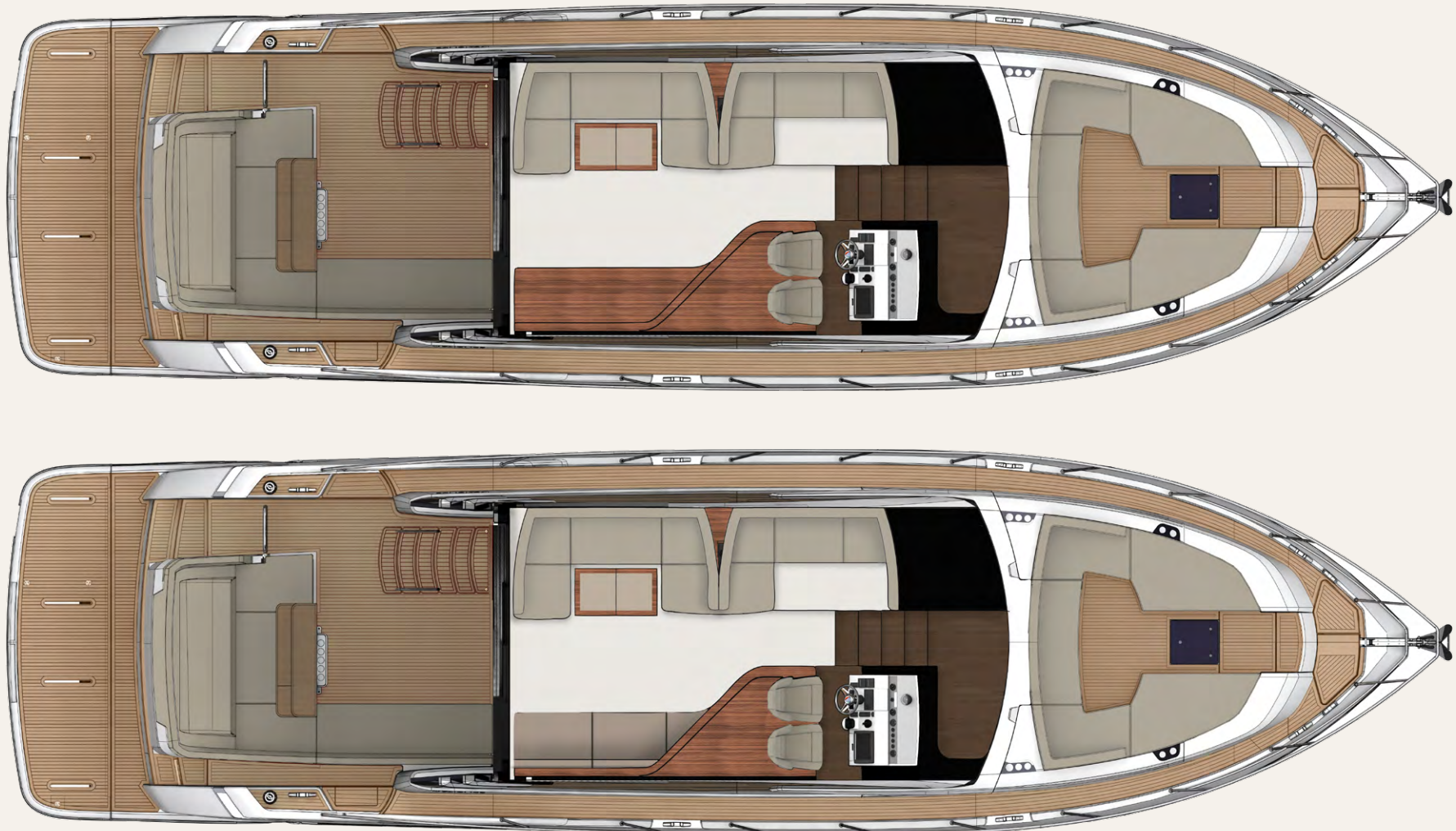
Galley up aft (option)



Galley up forward (option)

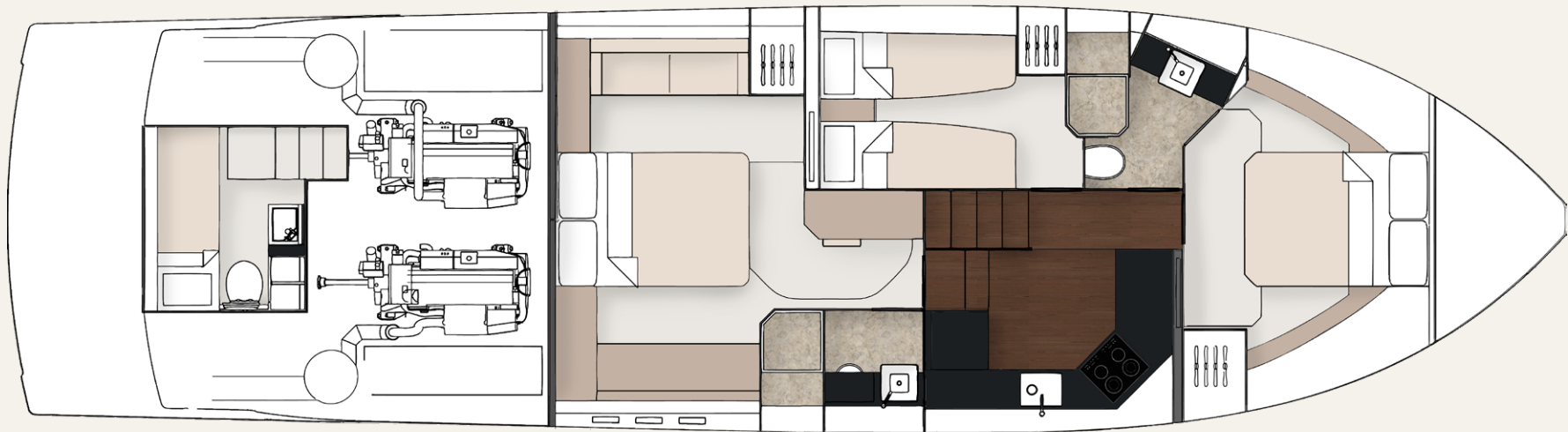


## SQUADRON 53 MAIN DECK





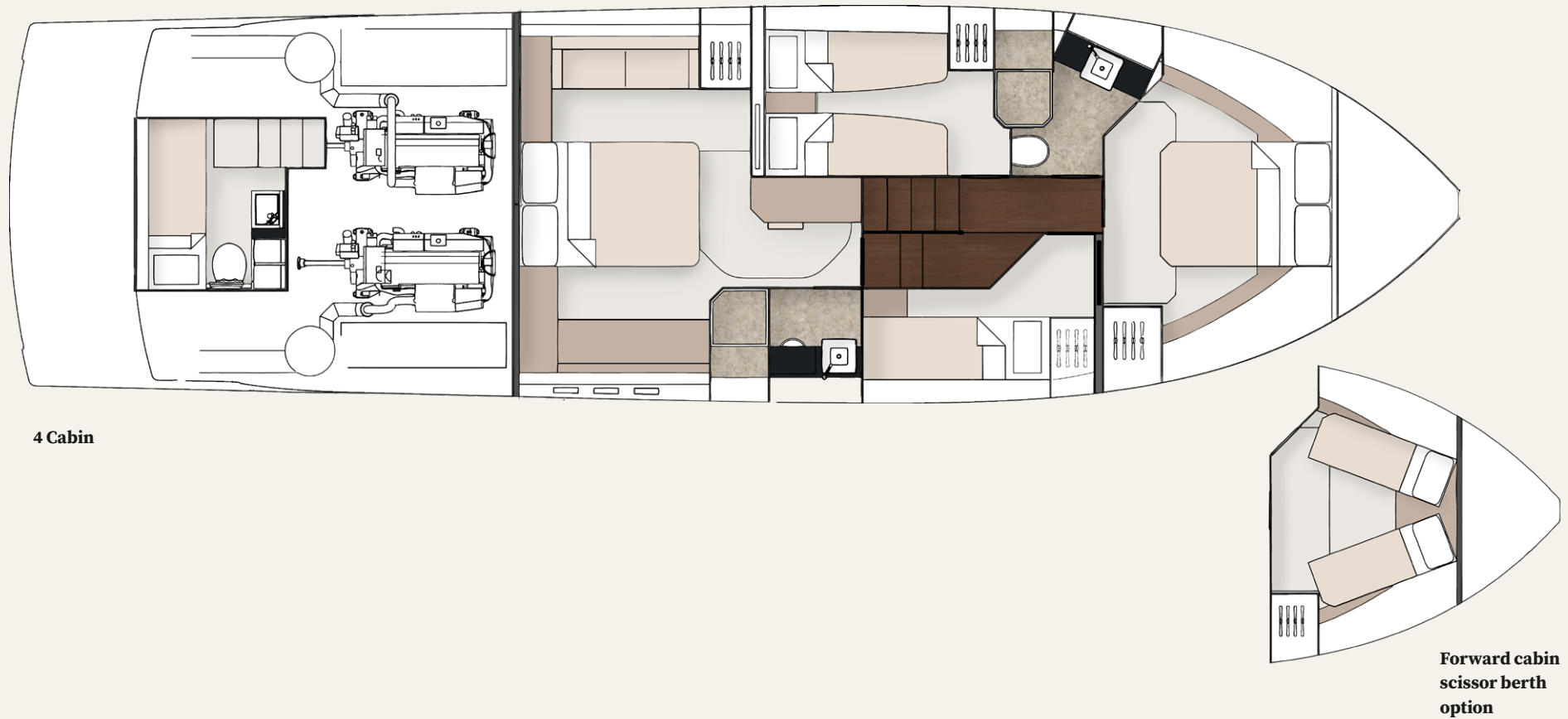
## SQUADRON 53 LOWER DECK



3 Cabin



## SQUADRON 53 LOWER DECK







## JOIN THE FAIRLINE FAMILY.

Visit **fairline.com** and start to  
see a world of possibilities.

Come to us for adventure. Come to us for design  
and heritage. And come to us for forward thinking.  
But most of all, come and experience our  
acclaimed Dealership network.

Each Appointed Fairline Dealer is a professional, thriving business,  
working with your best interests at heart and using their intimate  
local knowledge to your advantage. Yes, they will provide you with  
a trusted service, but also friendship and care beyond the call of duty.



Fairline Argentina  
Fairline Australia  
Fairline Baltic  
Fairline Benelux & West Germany  
Fairline Beirut  
Fairline Brazil  
Fairline Channel Islands  
Fairline Chesapeake  
Fairline Colombia  
Fairline Côte d'Azur  
Fairline Croatia

Fairline Cyprus  
Fairline Denia  
Fairline Eastbourne  
Fairline Eastern Canada  
Fairline Egypt  
Fairline Empuriabrava  
Fairline Finland  
Fairline Florida  
Fairline Great Lakes  
Fairline Greece  
Fairline Hong Kong

Fairline Ibiza  
Fairline India  
Fairline Israel  
Fairline Italy  
Fairline Korea  
Fairline London  
Fairline Maldives  
Fairline Mallorca  
Fairline Malta  
Fairline Menorca  
Fairline Mexico

Fairline Middle East  
Fairline Monaco  
Fairline New York  
Fairline New Zealand  
Fairline Northwest  
Fairline Norway  
Fairline Philippines  
Fairline Poland  
Fairline Poole  
Fairline Portugal  
Fairline Russia

Fairline Singapore  
Fairline South China  
Fairline South Germany & Austria  
Fairline Southampton  
Fairline Southern Spain  
Fairline Sweden  
Fairline Switzerland  
Fairline Thailand  
Fairline Turkey  
Fairline Ukraine

© FAIRLINE YACHTS LTD 2020. ALL RIGHTS RESERVED. FAIRLINE AND SQUADRON ARE REGISTERED TRADEMARKS OF FAIRLINE YACHTS LTD. TOGETHER WITH ALL TEXT AND IMAGES CONTAINED IN THIS PUBLISHED MATERIAL, THEY ARE PROTECTED BY COPYRIGHT AND MAY NOT BE PRODUCED IN ANY FORM WITHOUT THE EXPRESS WRITTEN PERMISSION OF THE COPYRIGHT OWNERS. Published by Fairline Yachts Ltd, Oundle, PE8 4HN, England. Fairline Yachts constantly seek ways of improving specifications, design and production. Therefore, alterations take place on a continuous basis. Whilst every effort is made to produce up-to-date literature, the descriptions, specifications, illustrations and photographs in this brochure should not be regarded as a definitive guide to current specifications, nor does it constitute an offer for the sale of any particular boat. Performance estimates are given in good faith, but are in no way guaranteed for any particular boat. Dirt on the bottom of the boat, damage to propellers, engine tuning, external water and air temperatures and the weight of crew, fuel and water carried can all adversely affect performance. For these and other reasons we can give no performance guarantees.