

## 2020 Model Year Standard Specification



### Principal Dimensions

**Length overall** (incl. pulpit):  
69'3" (21.12m)

**Height above waterline:**  
20'1" (6.13m)

**Beam** (incl. gunwale):  
17'2" (5.23m)

**Transport height:**  
20'4" (6.24m)

**Berths:**  
6 - 10

**Fuel capacity:**  
1029 gallons / 1236 US gallons  
(4680 litres)

**Draught:**  
5'1" (1.57m) unloaded

**Water capacity** (incl. calorifier):  
237 gallons / 285 US gallons (1080  
litres)

**Dry weight** (approx.):  
39.37 tonnes / 44 US tons (40,000kg)

### Engines & Performance

Twin Caterpillar C18-1150 shaft drive,  
diesel (1,150mhp each)

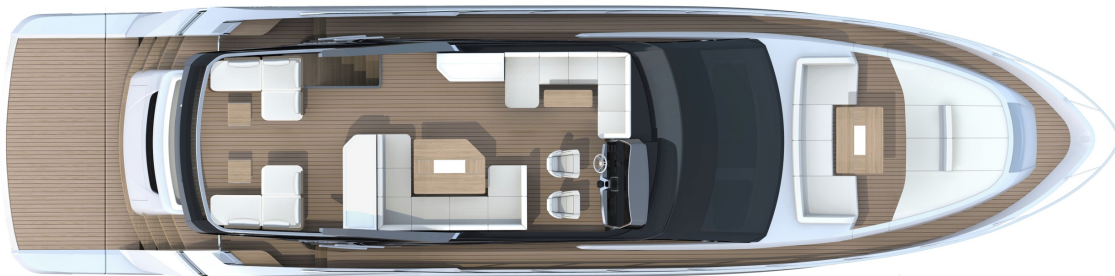
Twin MAN V8 1200 shaft drive, diesel  
(1,200mhp each)

Type Approval:  
B

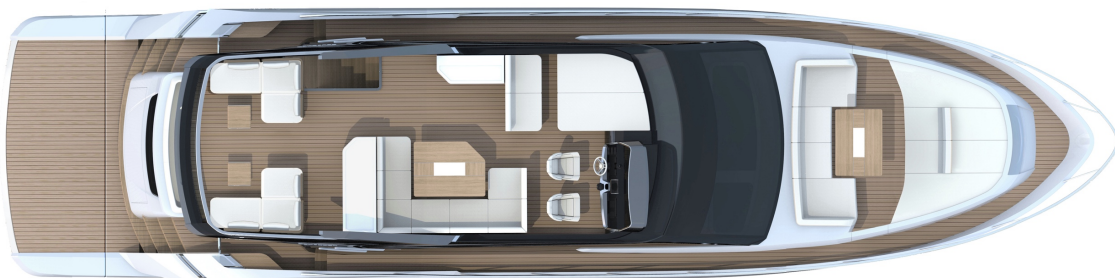
Max Capacity:  
16 persons

## Deck Plans

Flybridge with forward seating



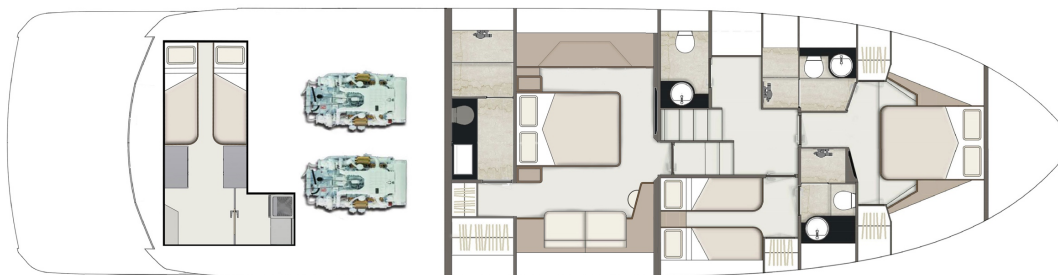
Flybridge with forward sunbed



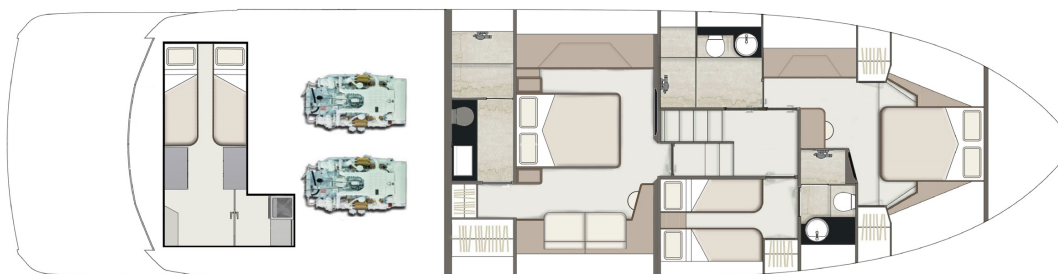
Main Deck



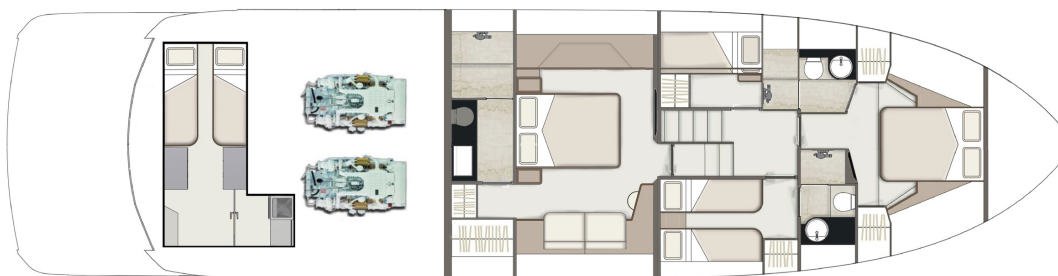
Lower Deck 3 Cabin & Day Head



Lower Deck 3 Cabin with Extended VIP



Lower Deck 4 Cabin



## Deck

Anchor chain locker	Moulded non-slip deck surface
Anchor winch	Remote control search light
Anchor winch controls	Riding light
Bathing platform ladder	Rigid swim ladder to bathing platform
Black mesh windscreen covers	Self-stowing Delta® galvanised anchor (40kg)
Calibrated galvanised anchor chain (12mm, 80m)	Stainless steel bow, spring & stern cleats
Deck wash outlets	Stainless steel bow fairleads
Ensign & staff	Stainless steel handrails
Fender set	Stainless steel pulpit
Foredeck cup holders	Teak laid bathing platform
Foredeck glazing	Transom gate from cockpit to hi/lo bathing platform
Foredeck seating & sunbeds	Twin horns
Foredeck stowage lockers	Water filler
Fuel fillers	Windscreen washers
Full set of IMCO navigation lights	Windscreen wipers
Hot & cold-water transom shower	
Manual bilge pump	

## Lower Helm

USB socket	f-Drive multifunction display
Adjustable/tilt steering wheel	Raymarine 16" display (x1)
Bilge pump switches with integral operating warning lights & audible alarms	Raymarine Type 1 autopilot
Bow thruster controls	Raymarine P70RS control head unit
Controls for engine bay fire extinguisher system	Raymarine RAY260E VHF marine radio
Drinks holders	Opening window
Electronic single-lever throttle & gear controls for port & starboard engines	Powered steering
Glass Bridge incorporating full engine instrumentation; tachometers, fuel gauges, temperature gauges, audible alarms & rudder position indicator	Red night-light illumination
High speed magnetic compass	Remote anchor winch controls
	Searchlight controls
	Switches for navigation & riding lights, windscreen wipers & engine room extractor fans
	Trim tab controls
	Twin independent helm & co-pilot seats

## Flybridge & Second Helm Position

12V heavy duty weatherproof socket	Fusion® amplifier remote display & speakers
Adjustable/tilt steering wheel	High speed magnetic compass
Adjustable bolstered helm seating	Moulded non-slip deck surface
Bilge pump switches with integral operating warning lights & audible alarms	Powered steering
Bow thruster controls	Radar arch/mast
Companion seating to helm	Remote anchor winch controls
Aft facing seating & tables	Remote control searchlight
Dedicated dining seating with dining table	Repeat flybridge engine instrumentation, controls & electronics
Drinks holders	Stainless steel handrails
Electronic single lever throttle & gear controls for port & starboard engines	Storage unit housing waste bin
Flybridge access hatch	Teak laid oversize flybridge steps
Flybridge bar with refrigerator, icemaker, sink & electric griddle	Teak table
Flybridge covers	Trim tab controls
	USB socket
	VHF radio incorporating intercom
	Wind-deflecting screen with grab rail

## Foredeck

Recessed seating area with low level lighting	Drinks holders
Seating and sunbed cushions with luft track fitting	Tonneau cover
	USB socket

## Electrical Systems

230 - 240V 50Hz
All 240V, 24V & 12V circuits (where applicable) protected by circuit breakers with main electrical load control panel
Dimmer switches
Fire shutdown system
Heavy duty circuit breakers
Isolating switches to all batteries
Onan® 21.5 kW generator
12 Volt
Voltage dropper from domestic batteries

## Electrical Systems

Continued

### 24 Volt

Batteries - 2 x heavy duty batteries exclusively for port engine starting

Batteries - 2 x heavy duty batteries exclusively for starboard engine starting

Batteries - 4 x heavy duty batteries wired in parallel supply for domestic services & port engine starting

Emergency battery coupling system permits each engine to start from opposite battery bank

### 240 Volt

Isolation summation transformer

Polarity check & earth leakage protection system

Power points throughout the yacht (fed from shore power or generator)

Regulated 80amp charger for domestic batteries

Shore power supply

Spare circuit breakers for optional equipment

## Cockpit

12V heavy duty weatherproof socket

Access hatch to engine room

Access hatch to lazarette or optional crew cabin

Bathing platform lights

Blue LED lighting to cockpit

Boat hook

Deck level lighting

Drinks holders

Fender stowage

Flybridge steps

Flybridge access hatch

Fusion® RA50 radio & remote control

Life raft stowage

Manual bilge pumps

Mooring warps & stowage

Teak laid floor throughout self-draining cockpit

USB socket

## Interior Décor

Choice of interior finishes from the Amalfi, Capri, Hamptons or St Tropez interior styling ranges selected by the Fairline Yachts Design Studio

## Hullform & Construction

Antifouling protection to hull

Bow thruster

Deep 'V' hull

Design, layout & detailing by AM Yacht Design and the Fairline Yachts Design Studio

Naval architecture by Vripack

Extended sound-proofing between engine room and accommodation

Feature windows with opening portholes

Moulded spray deflectors

Hull/deck joint bolted & bonded

Integrally moulded engine bearers

Isophthalic gel coat backed by isophthalic resin-rich powder-bound glass mat

Polyurethane foam cores throughout deck for strength & thermal insulation

Resin infused, cored hull & liner with hand laid deck & components

White hull

### Saloon

50" Samsung® LCD TV  
Harman Kardon® 2.1 with wireless connectivity  
Harman Kardon® wall mounted speakers  
Drinks cabinets with 8 lead crystal tumblers

LED ceiling lights  
Random oak flooring  
Sliding patio door to cockpit  
Venetian blinds  
V-leg fixed dining table

### Galley

Avonite® work surface  
Chopping board to sink infill  
Crockery stowage  
Electric induction hob  
Extractor fan  
China dinner service & cutlery set  
Fire extinguisher

First aid kit  
Fridge Freezer  
Integrated waste bin  
LED ceiling lights  
Random teak floor  
Stowage cupboards & drawers  
Sink with hot & cold mixer tap

### Lobby

Access to electrical control panel  
Access to day head

Lighting to stair risers  
Storage unit

## Accommodation

### Forward Cabin

Bedside tables	LED ceiling lights
Double bed with storage drawers	Reading lights
Escape hatch to foredeck with blind	Sprung mattress
Feature windows with single opening porthole	Upholstered bedhead
Full length mirror	Venetian blinds
	Wardrobes with leather inlayed doors

### Forward En Suite

Avonite® vanity unit with locker & basin with hot & cold pressurised water	Full standing height shower with hinged door
Avonite® floor	Mirror
Electric silent-flush freshwater toilet	Shower tray automatic pump-out system
Extractor fan	Stowage locker
Feature window with opening porthole	Towel rail
Full set of bathroom fittings	Towel set
	Venetian blind

### Master Cabin

40" Samsung® LCD TV	Harman Kardon® wall mounted speakers
Bedside tables	LED ceiling lights
King size bed with interior sprung mattress & storage drawers	Reading lights
Feature windows with opening portholes	Upholstered bedhead
Full-height standing headroom	Vanity unit/bureau with chair
Fusion® audio system with wireless connectivity	Venetian blinds
	Wardrobes with mirrored doors

### Master En Suite

Avonite® vanity unit with locker & twin basins with hot & cold pressurised water	LED ceiling lights
Avonite® floor	Mirror
Electric silent-flush freshwater toilet	Overhead lockers
Extractor fan	Random teak floor
Feature window with single opening porthole	Shower tray automatic pump-out system
Full set of bathroom fittings	Towel rail
Full standing height shower with seat & glass hinged door	Towel set
	Venetian blind

## Starboard Guest Cabin

Bedside table  
 Drawers under bed  
 Feature window with single opening porthole  
 Full length berths (x 2) with high-comfort interior sprung mattresses  
 Full length mirror

Hanging locker with mirror  
 LED ceiling lights  
 Reading lights  
 Venetian blind  
 Wardrobe with leather inlay door

## Starboard Guest Cabin En Suite

Avonite® vanity unit with locker & basin with hot & cold pressurised water  
 Avonite® floor  
 Electric silent-flush freshwater toilet  
 Extractor fan  
 Feature window with opening porthole  
 Full set of bathroom fittings

Full standing height shower with hinged door  
 Mirror  
 Shower tray automatic pump-out system  
 Stowage locker  
 Towel rail  
 Towel set  
 Venetian blind

## Port Guest Cabin

Optional in lieu of day head & lobby storage

Full length bunks (x 2) with high-comfort interior sprung mattresses  
 Full length mirror  
 LED ceiling lights

Opening porthole  
 Reading lights  
 Venetian blind  
 Wardrobe

## Day Head

Avonite® vanity unit with locker & basin with hot & cold pressurised water  
 Electric silent-flush freshwater toilet  
 Feature window with opening porthole

Full set of bathroom fittings  
 LED ceiling lights  
 Mirror  
 Random oak floor  
 Towel rail  
 Towel set

## Aft Utility Room

LED ceiling lights  
 Power points

Timber flooring  
 Wet hanging area

## Aft Crew Cabin

Optional

220V/240V shaving point  
Access to en-suite bathroom  
Aft crew cabin access from platform with stairs  
Air conditioning  
Opening porthole with fly screen  
Electric silent-flush freshwater toilet  
Fire extinguisher  
Full standing height shower with hinged floor tray

LED ceiling lights  
Mirror  
One fold-up berth & one fixed berth with drawers below  
Power points  
Random oak floor  
Shower proof curtains  
Sink with hot & cold mixer tap

## Engines & Sterngear

Access through cockpit hatch  
Automatic bilge pumps for forward bilge, engine bay & rudder bay with manual 'on' override  
Automatic engine bay fire extinguisher system with warnings at both helms  
Dripless shaft seals  
Electric engine bay fans  
Electric trim tabs with cathodic protection  
Engine bay lights

Engine room soundproofing  
Exhaust overheat warning system  
High capacity emergency manual bilge pump system  
Manganese bronze 'P' brackets  
Manganese bronze propellers contra-rotating  
Sea cocks on all inlets/outlets below waterline  
Water cooled engine exhausts with through hull outlets shafts

## Fuel System

Changeover valve system to permit each engine to draw fuel from & return fuel to either tank  
Emergency fuel shut off valves

High capacity water separators & fuel filters  
Twin alloy fuel tanks

## Freshwater System

Automatic, pressurised supply  
80 litre calorifier hot water system

Water tank

## Black Waste

Holding tank (400 litres) with electronic macerator pump-out

## Air Conditioning

Chilled water high capacity system

Screen demist vents linked to air conditioning

## Commissioning

Full Yacht Division commissioning, pre-delivery inspection & handover at the Fairline Marine Park, Hythe, UK.

## USA Specifications

In addition to or in lieu of those listed above

Voltage - 2 x 110V (220V) 60Hz

Whilst every effort is made to keep all sales literature up to date, it should not be regarded as an infallible statement of current specifications & does not constitute an offer for the sale of any particular boat. We continually seek to improve the specification & design of our boats, so alterations & upgrades to specifications take place continually.

Appointed dealers are not agents of Fairline Yachts Ltd & are not authorised to commit Fairline Yachts Ltd by any express or implied undertaking or representation.

Performance Figures: Power quoted in our literature for diesel inboard engines is crankshaft output.

Performance Estimates: Performance estimates are given in good faith but are in no way guaranteed for any particular model. Dirt on the bottom of the boat, damage to the propellers, engine tuning, external water & air temperatures & the weight of crew, fuel & water carried can all adversely affect performance. For those & other reasons we can give no performance guarantees