

2020 Model Year Standard Specification



Principal Dimensions

Length overall (incl. pulpit):
65'4" (19.96m)

Length overall (excl. pulpit):
65'2" (19.88m)

Beam (incl. gunwale):
17'2" (5.23m)

Berths:
6 - 10

Draught:
4'8" (1.47m)

Height above waterline
(incl. arch & nav. light mast):
17' (5.20m)

Transport height:
16'4" (5.0m)

Dry weight (approx.):
33.56 tonnes / 37.47 US tons (34,000kg)

Fuel capacity:
1,029 gallons / 1,236 US gallons (4,680 litres)

Water capacity (incl. calorifier):
237 gallons / 285 US gallons
(1,080 litres)

Engines & Performance

Twin Caterpillar C18 shaft drive, diesel
(1150mhp each):
31 knots

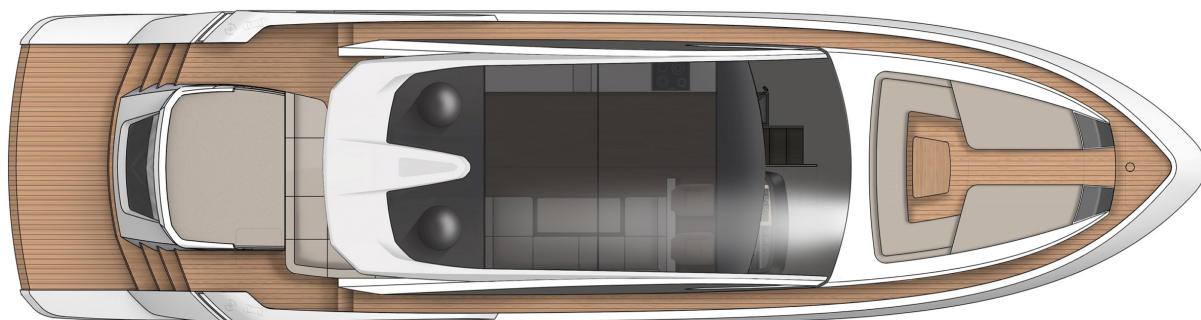
Type Approval:
B

Twin MAN V8 1200 shaft drive, diesel
(1200mhp each):
32 knots (estimated maximum)

Max Capacity:
16 persons

Deck Plans

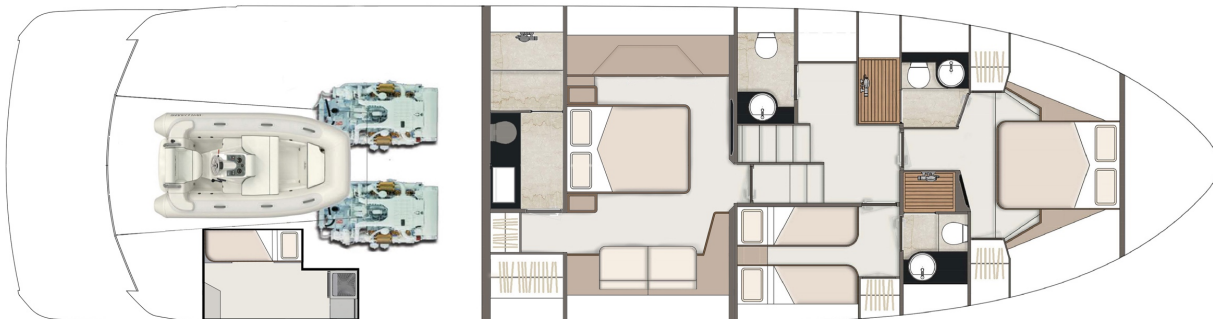
Exterior Deck



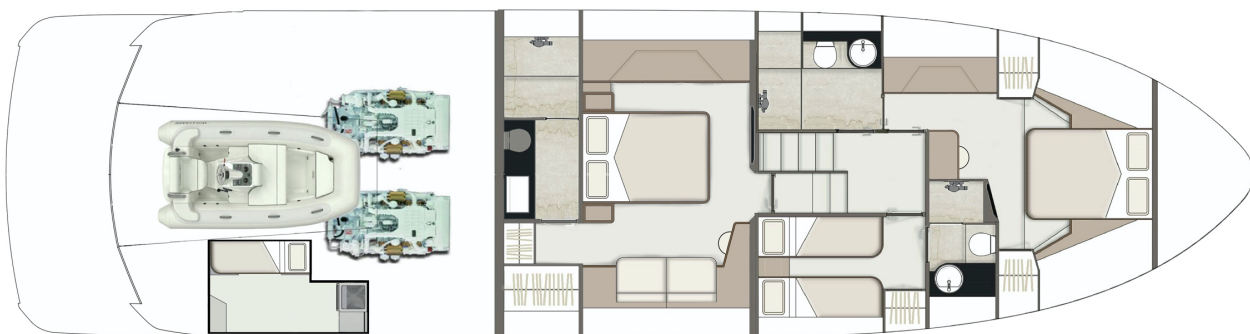
Main Deck



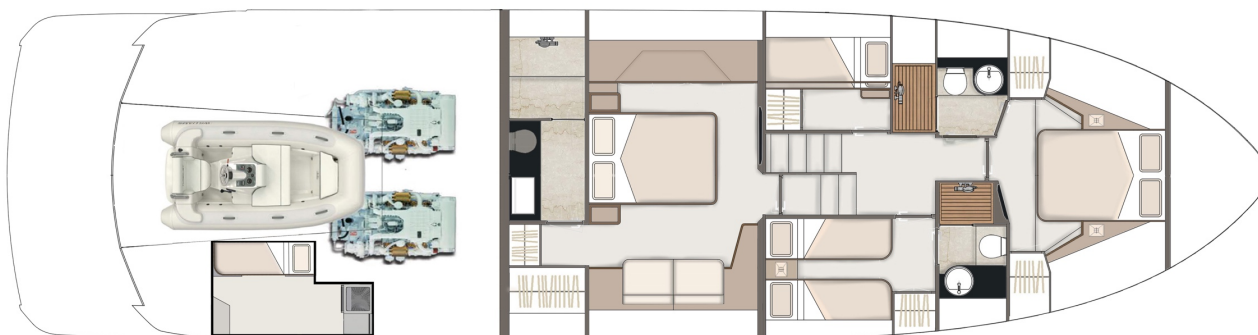
Lower Deck 3 Cabin with Day Head



Lower Deck 3 Cabin with Extended VIP



Lower Deck 4 Cabin



Deck

Anchor chain locker	Manual bilge pump forward
Anchor winch (electric)	Moulded non-slip deck surface
Anchor winch controls	Remote control searchlight
Bathing platform ladder	Self-stowing Delta® galvanised anchor (40kg)
Calibrated galvanised anchor chain (12mm, 80m)	Stainless steel aft fairleads
Ensign staff	Stainless steel bow fairleads
Fender set	Stainless steel bow, cockpit, stern & twin spring cleats
Foredeck drinks holders	Stainless steel gunwale
Foredeck glazing	Stainless steel pulpit
Foredeck seating & sunbeds	Teak laid hi/lo bathing platform
Foredeck stowage lockers	Twin horns
Fuel fillers	Water filler
Full set of IMCO navigation lights	Windscreen washers
Handrail	Windscreen wipers
Hot & cold water transom shower	

Helm Position

USB socket	Raymarine GS165 multi-function display
Adjustable/tilt steering wheel	Raymarine Type 1 autopilot
Bilge pump switches with integral operating warning lights & audible alarms	Raymarine P70RS control head unit
Black mesh windscreen covers	Raymarine RAY260E VHF marine radio
Bow thruster control	High speed magnetic compass
Controls for engine bay fire extinguisher system	Opening window (electric)
Drinks holders	Powered steering
Electronic single-lever throttle & gear controls for port & starboard engines	Powered glazed sunroof with internal blind
Glass Bridge incorporating full engine instrumentation; tachometers, fuel gauges, temperature gauges, audible alarms, rudder position indicator	Red night-light illumination to helm
f-Drive (Fairline multi-function glass bridge)	Remote anchor winch controls
	Searchlight controls
	Switchgear
	Trim tab controls
	Twin helm seats

Electrical Systems

230 - 240V 50Hz

All 240V, 24V & 12V circuits (where applicable) protected by circuit breakers with main electrical load control panel

Heavy duty circuit breakers

Isolating switches to all batteries

Onan® 22.5kW generator

12 Volt

Voltage dropper from domestic batteries

Electrical Systems

Continued

24 Volt

Batteries - 2 x heavy duty batteries exclusively for port engine starting

Batteries - 2 x heavy duty batteries exclusively for starboard engine starting

Batteries - 4 x heavy duty batteries wired in parallel supplying domestic services & port engine starting

Circuit breaker for anchor winch

Emergency battery coupling system permits each engine to start from opposite battery bank

Inverter

Isolation summation transformer

240 Volt

Polarity check & earth leakage protection system

Power points throughout fed from shore power or generator

Regulated 75amp charger for domestic batteries

Shore power supply line

Cockpit

12V heavy duty weatherproof socket

Access to lazarette or crew cabin

Access to side deck

Bathing platform lights

Boat hook

Cockpit cover (white)

Cockpit bar unit

Deck level lighting

Drinks holders

Engine bay access hatch with stainless steel gas struts

Fender stowage

Fusion audio system with wireless connectivity

Garage for Williams 325 Jet Tender drinks holders

Twin transom gates

Life raft stowage

Manual bilge pump

Mooring warps

Mooring warp stowage

Seating, 'U' shaped

Single level floor from cockpit through saloon to helm

Speakers

Sunbed over garage

Teak laid floor throughout self-draining cockpit

Teak table with drinks holders

Transom gate

Interior Décor

Choice of interior finishes from the Amalfi, Capri, Hamptons or St Tropez interior styling ranges selected by AM Yacht Design and the Fairline Yachts Design Studio

Hullform & Construction

Antifouling protection to hull	Hull/deck joint bolted & bonded
Bow thruster	Integrally moulded engine bearers
Deep 'V' hull	Isophthalic gel coat backed by
Design, layout & detailing by AM Yacht Design and the Fairline Yachts Design Studio	isophthalic resin-rich powder-bound glass mat
Naval architecture by Vripack	Polyurethane foam cores throughout deck for strength & thermal insulation
Extended sound proofing between engine room and accommodation	Resin infused cored hull & liner with hand-laid deck & components
Feature windows with opening portholes	White hull
Moulded spray deflectors	

Saloon

50" Samsung LCD TV, Harman Kardon 2.1 with wireless connectivity	Overhead lighting
Harman Kardon wall mounted speakers	Random oak flooring
Electric hardtop with overhead glazing	Sliding patio door to cockpit with 'power down' functionality
	Venetian blinds

Galley

Avonite work surface	Induction hob
Chopping board to sink infill	Integrated waste bin
Crockery stowage	Microwave combi oven
Dinner service 24-piece, 6 place settings	Overhead lighting
Fire extinguisher	Random oak floor
First aid kit	Sink with hot & cold mixer tap
Fridge/freezer	Stowage cupboards & drawers

Lobby

Access to master cabin, guest cabins & day head	Lighting to stair risers
Handrail	Storage unit (standard layout)

Accommodation

Master Cabin

40" Samsung LCD TV	Fusion audio system with wireless connectivity
Bedside tables	Mirror
Drawers to port side	Overhead feature lighting
Harman Kardon wall mounted speakers	Reading lights
Kingsize double bed with sprung mattress	Sofa
Feature windows with opening portholes	Vanity unit
	Venetian blinds
	Wardrobe with mirrored doors

Master Cabin En Suite

Avonite vanity unit locker & basin with hot & cold pressurised water	Large hull window with single opening port hole
Avonite floor	Mirror
Electric silent-flush freshwater toilet	Mirrored lockers
Extractor fan	Overhead lighting
Full set of bathroom fittings	Shower tray automatic pump-out system
Full size shower with seat & glass, hinged door	Venetian blind

Forward Guest Cabin

Bedside tables	Overhead glazing with blind
Double bed with sprung mattress and storage drawers	Overhead lighting
Escape hatch to foredeck	Reading lights
Feature windows with single opening porthole	Venetian blinds
	Wardrobe with leather inlay doors

Forward Guest Cabin En Suite

Avonite floor	Mirrored lockers
Electric silent-flush freshwater toilet	Overhead lighting
Extractor fan	Shower tray automatic pump-out system
Full set of bathroom fittings	Vanity unit locker & basin with hot & cold pressurised water
Full standing height shower with glass hinged door	Venetian blind
Mirror	

Starboard side Guest Cabin

Bedside table	Reading lights
Feature windows with single opening porthole	Twin full length berths with sprung mattresses
Mirror	Venetian blind
Overhead lighting	Wardrobe with leather inlay doors

Port side Guest Cabin Optional

Feature windows with single opening porthole
Mirror
Twin bunk berths with sprung mattresses

Venetian blind
Wardrobe with leather inlay doors

Single Crew Cabin Optional

Access through transom steps
Electric silent-flush freshwater toilet
Feature window with venetian blind
Full length berth with foam mattress

Hanging locker
Mirror
Opening porthole
Overhead lighting
Power point
Sink with hot & cold mixer tap

Engines & Sterngear

Automatic bilge pumps for forward bilge, engine bay & rudder bay with manual 'on' override
Automatic engine bay fire extinguisher system
Dripless shaft seals
Electric engine bay fans
Electro-hydraulic trim tabs with cathodic protection
Engine air intakes
Engine bay lights

Engine room soundproofing
Exhaust overheat warning system
High capacity emergency manual bilge pump system
Manganese bronze 'P' brackets
Manganese bronze propellers contra-rotating
Sea cocks on all inlets/outlets below waterline
Stainless steel alloy shafts

Air Conditioning

Chilled water high capacity system producing 120,000btu

Fuel System

Emergency fuel shut-off valves accessible via cable-operated remote control
High capacity water separators & fuel filters

High capacity twin fuel tanks (5000 litres)
Individual fillers & vents to port & starboard

Freshwater System

Automatic, pressurised supply
Calorifier hot water system

Water tank

Black Water

Holding tank (300 litre capacity) with electric macerator pump-out

Commissioning

Full Fairline Yacht Division commissioning, pre-delivery inspection & handover at Fairline Yachts Commissioning Centre, Ipswich UK

USA Specifications

Voltage - 2 x 110V (220V) 60Hz

In addition to or in lieu of
those listed above

Whilst every effort is made to keep all sales literature up to date, it should not be regarded as an infallible statement of current specifications & does not constitute an offer for the sale of any particular boat. We continually seek to improve the specification & design of our boats, so alterations & upgrades to specifications take place continually.

Appointed dealers are not agents of Fairline Yachts Ltd & are not authorised to commit Fairline Yachts Ltd by any express or implied undertaking or representation.

Performance Figures: Power quoted in our literature for diesel inboard engines is crankshaft output.

Performance Estimates: Performance estimates are given in good faith but are in no way guaranteed for any particular model. Dirt on the bottom of the boat, damage to the propellers, engine tuning, external water & air temperatures & the weight of crew, fuel & water carried can all adversely affect performance. For those & other reasons we can give no performance guarantees